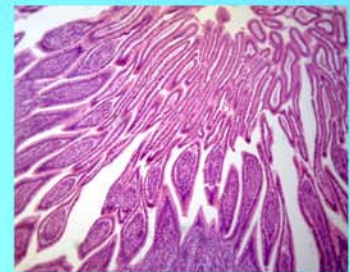




LABOMED, INC.

www.labomed.com  
spectro@labomed.com



## LB-101 Monocular Zoom Microscope

Eyeiece:	Eyeiece WF10x
Zoom Ratio:	Zoom Ratio: 1:6.5 (0.7×-4.5×)
Total Magnification:	7×-45×
Working Distance:	90mm
Stand Focusing Range:	55mm
Stand Clips:	90mm Frosted Glass or Black/ White Plate & Clips
Illumination:	Reflect Illumination, 6V/15W Halogen Lamp with Reflector
Bottom Illumination:	6V/20W Halogen Lamp
Video System:	C Mount



www.labomed.com  
spectro@labomed.com

# LB-101 Monocular Zoom Microscope

## Introduction

LB-101 Monocular Zoom Microscope is a precise optical system providing high resolution, sharp and strong stereoscopic images.  $7\times$ - $45\times$  zoom images can be observed by easy operation. It is a very good microscope and can be used in semi-conductor and integrated circuit board inspection and measurement. It is also can be used in educational demonstrations and agriculture research areas.

Monocular Zoom Body LB-101 can also be flexibly equipped with a frame to work with a semi-conductor and integrated circuit board production line. With a microscope digital eyepiece LB-101, it turns into a digital microscope. It then can be connected to a PC to analyze the object.

## Features

Infinite and high quality zoom optical system 1:6.5.

Integration structure design makes it occupy less working space.

High-resolution camera, USB2.0 output.

A wide range of accessories to be equipped with the microscope for multi-purpose.

Digital camera connected to computer to achieve analysis function.

Wider viewing field (eye survey up to 85mm).

Higher magnification (up to 400X with 15" monitor).



## Applications

LB-101 Monocular Zoom Microscopes are widely used in educational demonstration, agriculture research, semi-conductor and integrated circuit inspection and so on.

## Technical Specifications

Eyepiece:	Eyepiece WF10x
Zoom Ratio:	Zoom Ratio: 1:6.5 ( $0.7\times$ - $4.5\times$ )
Total Magnification:	$7\times$ - $45\times$
Working Distance:	90mm
Stand Focusing Range:	55mm
Stand Clips:	90mm Frosted Glass or Black/ White Plate & Clips
Illumination:	Reflect Illumination, 6V/15W Halogen Lamp with Reflector
Bottom Illumination:	6V/20W Halogen Lamp
Video System:	C Mount