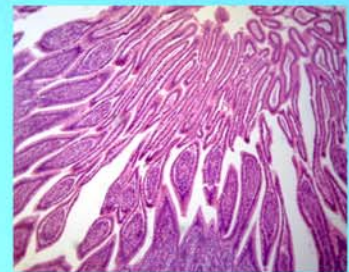




LABOMED, INC.

www.labomed.com  
spectro@labomed.com



## LB-100 Monocular Microscope

High resolution and high zoom ratio (1:8) .

Long working distance of 117mm.

Wide field of view: upto 222mm (calculated with camera sensor of 1/2")

Alternative objective lens and eyepiece are available, so as to obtain a multiple magnification.



www.labomed.com  
spectro@labomed.com

# LB-100 Monocular Microscope

## Introduction

LB-100 Monocular Microscope is specially designed to work with CCD and other cameras (Including USB digital cameras, VGA digital cameras and HDMI digital cameras etc.) which have a C-mount and can display the image on a LCD monitor, TV and PC. It has features of high-resolution, high contrast, large depth of field, long working distance, high zoom ratio and is easy to operate. It consists of objective, zoom body and CCD video eyepiece. The standard configuration comes with 1× video eyepiece and 1× objective. 0.5×, 0.75×, 1.5×, 2× video eyepieces and 0.5×, 0.75×, 1.5×, 2× objectives are optional. LB-100 can be used in semiconductor and electronics industry, biological, education and scientific research area.

## Applications

With excellent performance, complete accessories, easy to operate features, It can be widely used in semiconductor and electronic industry for small parts inspection, assembly and repair. It also can be applied to biological anatomy, jewelry inspection, schools education and research areas with special stand and objectives.

## Technical Specifications

Eyepiece:	1× (standard)
Objective:	1× (standard)
Working distance:	117mm
zoom magnification:	0.4×-3.2×
Zoom Ratio:	1:8, With eyepiece and objectives, optical magnification range: 0.1×-12.8×
Max. Adaptive CCD size:	2/3"
Diameter:	The diameter of the LB-100 part, which is connected to the focusing arm is 40mm.
CCD connector:	Standard C-mount, the distance to camera sensor is 17.53mm.

